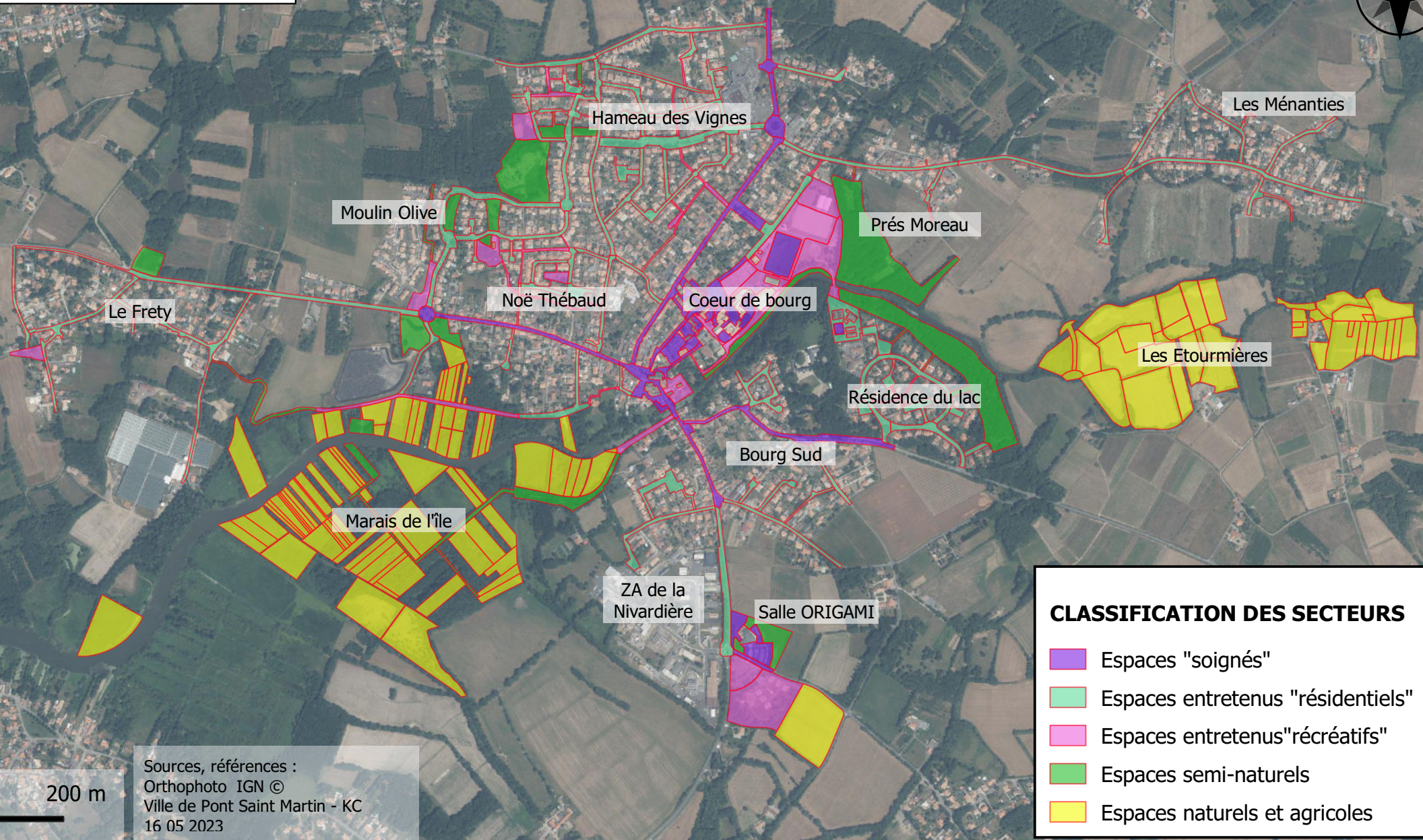







Plan de gestion différencié - Ville de Pont Saint Martin

Ensemble des surfaces en gestion municipale - mai 2023

Vue générale



CLASSIFICATION DES SECTEURS

-  Espaces "soignés"
-  Espaces entretenus "résidentiels"
-  Espaces entretenus "récréatifs"
-  Espaces semi-naturels
-  Espaces naturels et agricoles

Sources, références :
Orthophoto IGN ©
Ville de Pont Saint Martin - KC
16 05 2023

